

State of Wyoming Corner Record

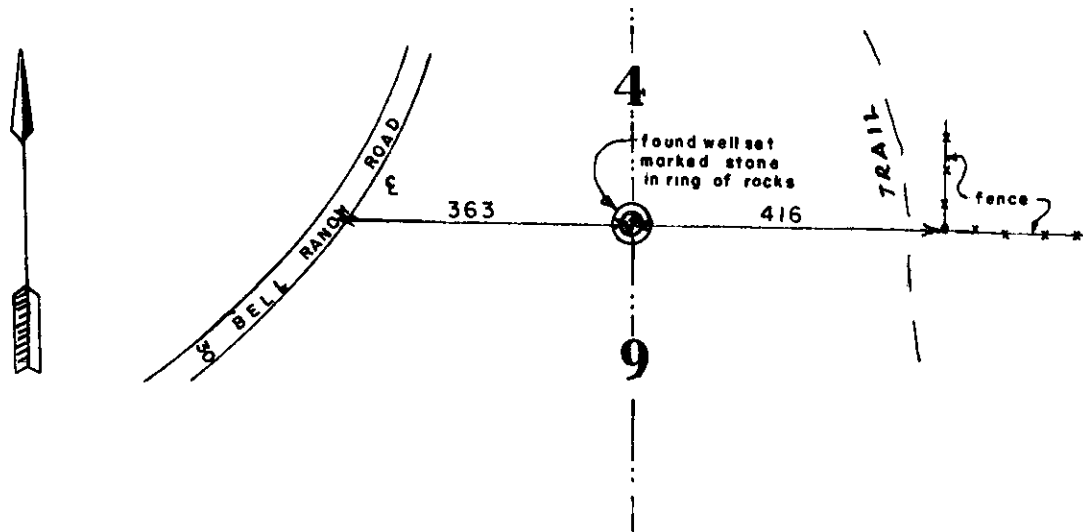
(In compliance with the *CORNER PERPETUATION AND FILING ACT*, Wyoming Statutes, 1977, Section 36-11-101, et, seq., and the Rules and Regulations of the Board of Registration for Professional Engineers and Professional Land Surveyors)

Reverse side of this form may be used if more space is needed.

Record of original survey and citation of source of historical information (if corner is lost or obliterated). Description of corner monumentation evidence found and/or monument and accessories established to perpetuate the location of this corner. Sketch of relative location of monument, accessories, and reference points with course and distance to adjacent corner(s) (if determined in this survey). Method and rationale for reestablishment of lost or obliterated corner.

GLO East on Random Line - Set temp at 40 chains; intersect East Boundary 60 links South of corner - adjust and run on a trueline S89°34'W 40.10 chains and set 14"x9"x6" boulder for 1/4 corner.

Found granite boulder 14"x9"x6" with 1/4 carved thereon well set and legible, ref. as shown.



160350

1995 APR 10 AM 9:08

Date of Field Work: 1 April 1995 Office Reference: _____

CROSS INDEX DIAGRAM

Firm/Agency, Address

Terrestrial Surveying & Mapping

P. O. Box 82

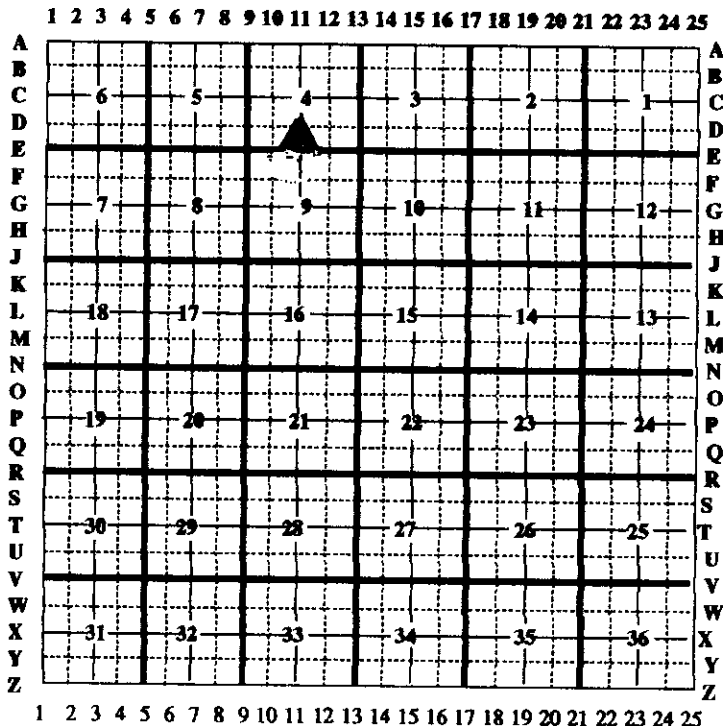
Cheyenne, Wy 82003

Telephone Number: 634-9360

This corner record was prepared by me
or under my direction and
supervision.

SEAL & SIGNATURE

Larry J. [Signature]
April 9/95



Corner Name: 1/4 Section: 4/9 T14 N R65W : 6th P.M. Cross-Index No.: E-11